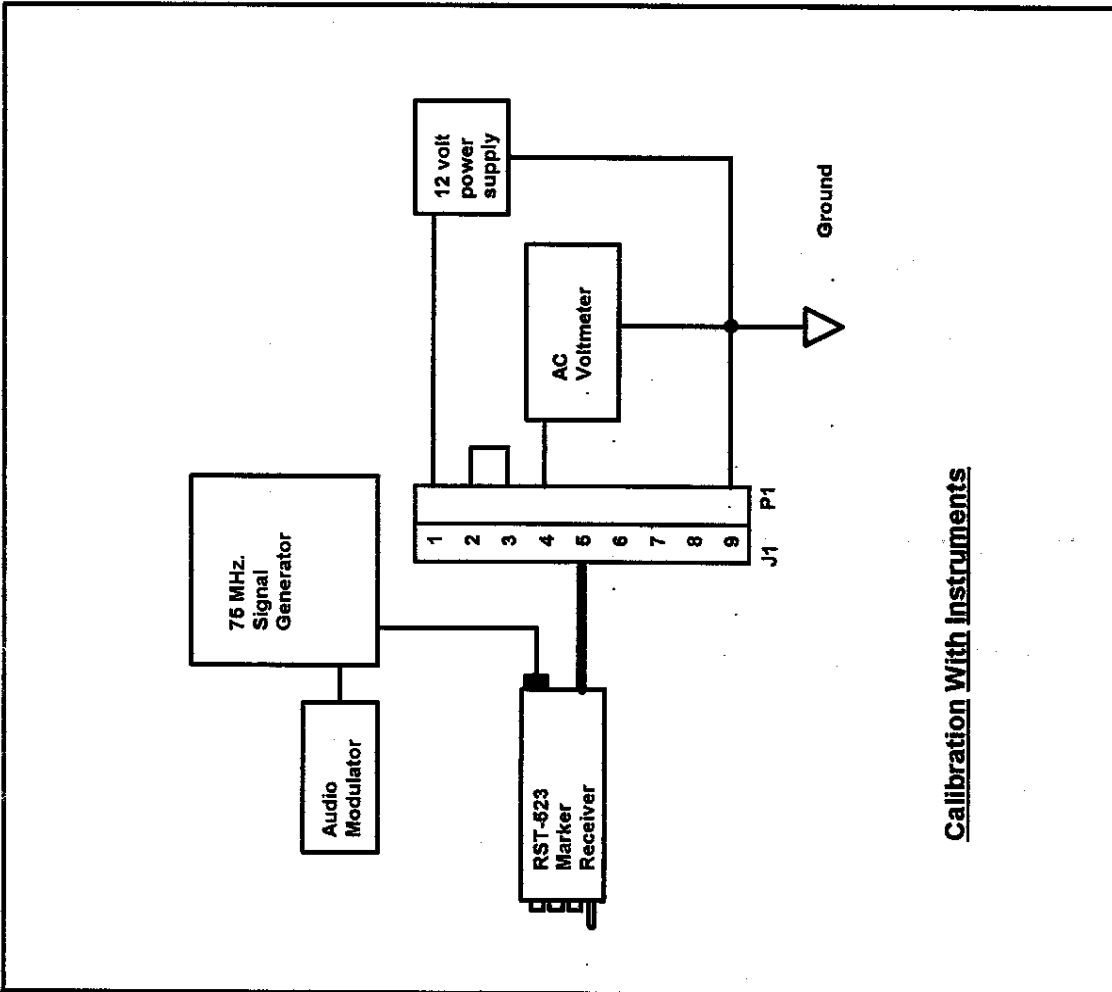


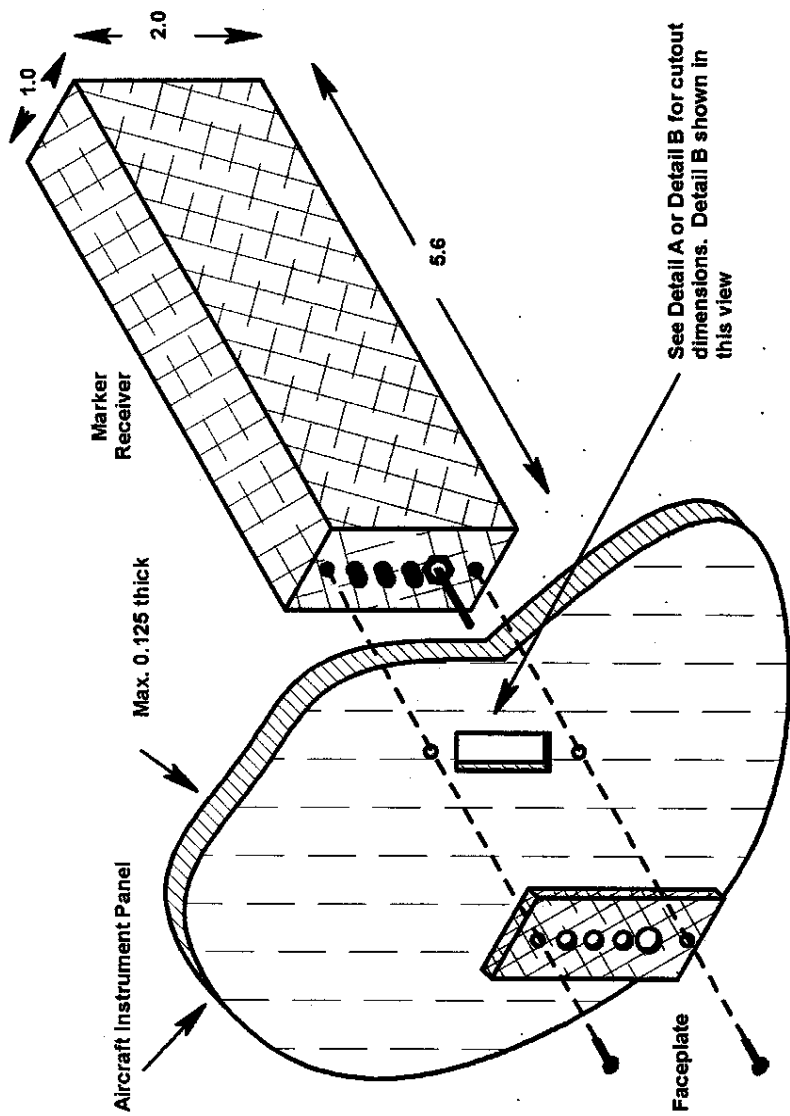
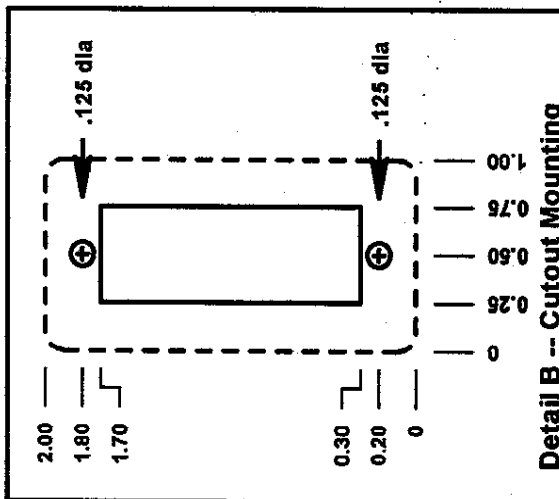
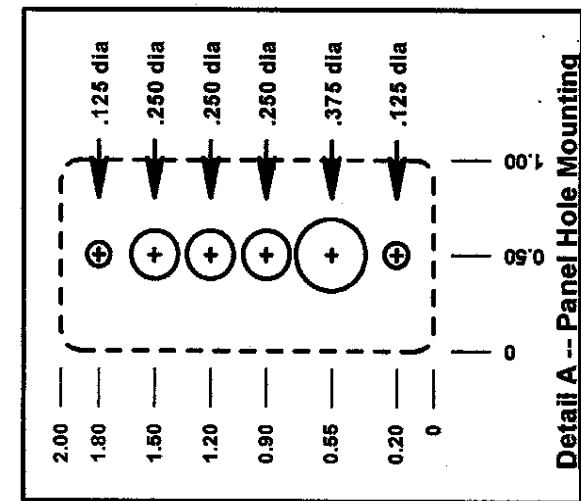
Calibration Without Instruments



Calibration With Instruments

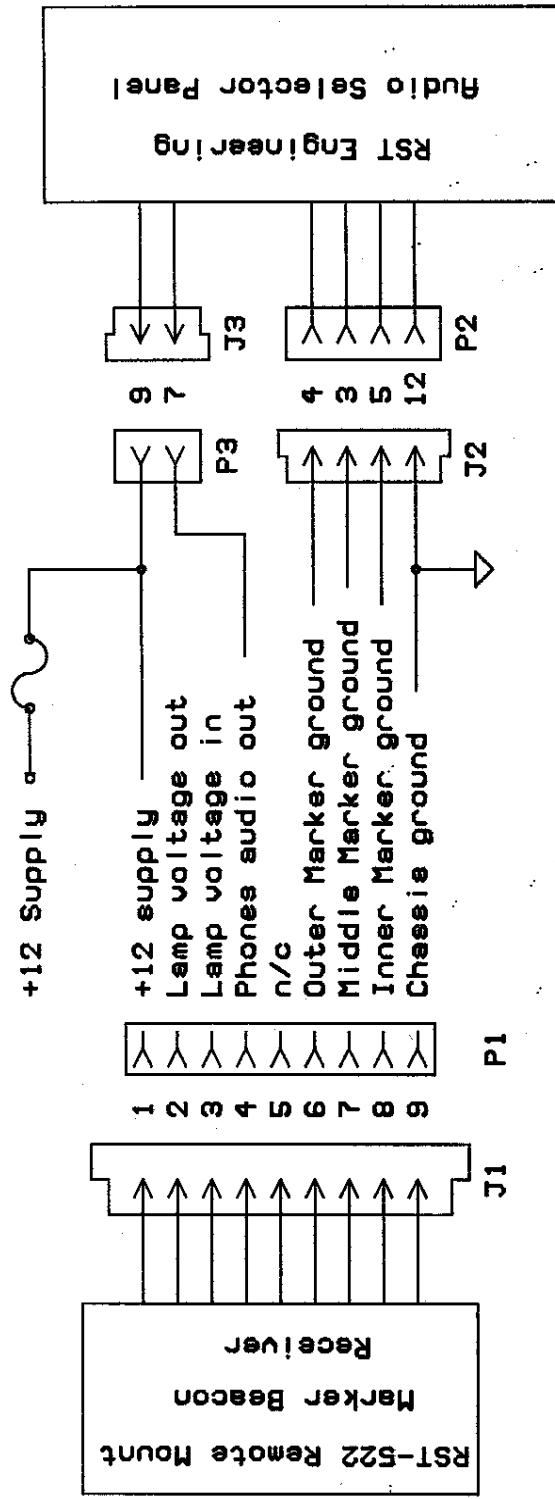
Calibration Connections

Scale: NTS	Approved by: <i>Jim Weir</i>	Drawn by: OWJ
Date: 6 Sep 96		Rev: A
RST Engineering 13249 Grass Valley Ave Grass Valley CA 95945 916/272-2203 (voice & fax) rst-engr@aro.net		Drawing # 523-3951



Mechanical Installation

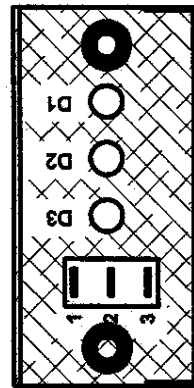
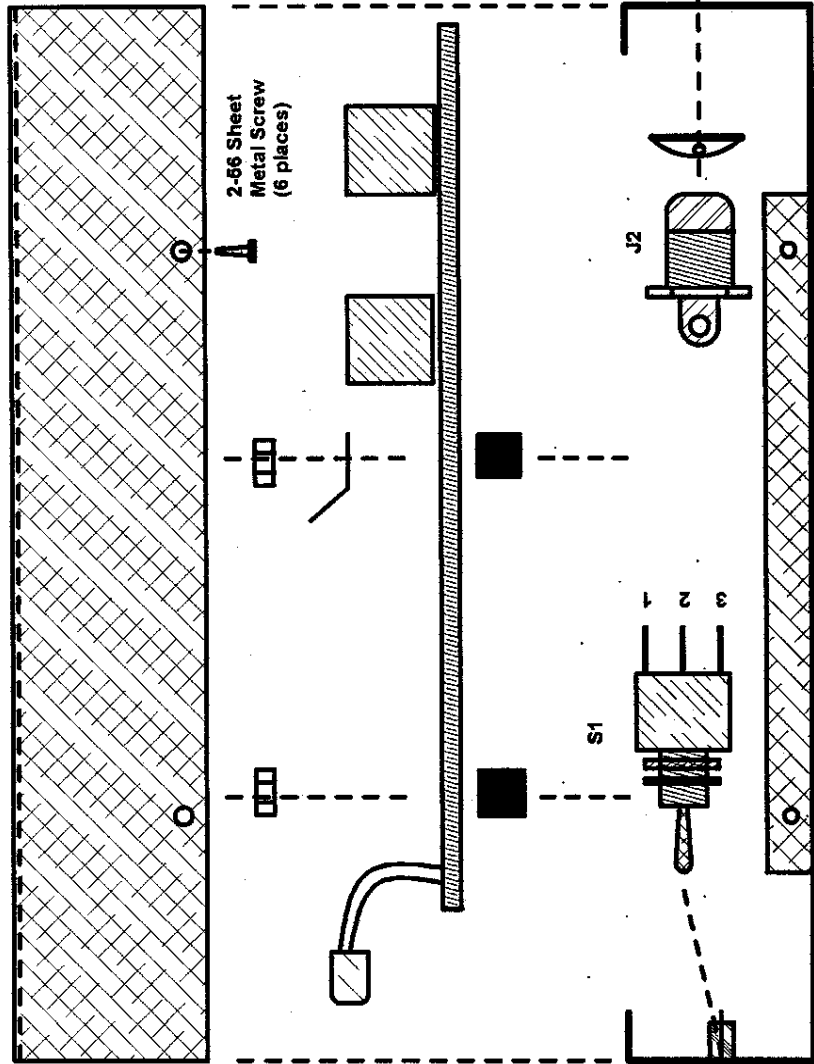
Scale: NTS	Approved by: <i>Jim Weir</i>	Drawn by: OWJ
Date: 11 Sep 96		Rev: A
RST Engineering		Drawing #
13249 Grass Valley Ave Grass Valley CA 95945		523-3900
916/272-2203 (voice & fax)		rst-engr@oro.net



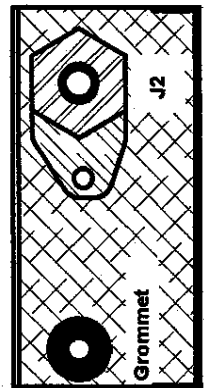
NOTES:

1. The Audio Selector Panel can be any of the RST-500 series audio panels with either incandescent or LED lamps.
2. The Marker Receiver may either be fused from the same fuse as the audio panel or it may have its own separate fuse.

RST-523 Marker Beacon Receiver Marker Beacon/Audio Panel Schematic		Drawn By: OHG
Scale: Schematic	Approved By: Jim Weir	Revision: A
Date: 15 Aug 96		
RST Engineering 13249 Grace Valley Ave. Grace Valley CA 95945 818/272-2289 (voice & fax) Web: rst-engineering.net		Drawing # 523-3950



Front Chassis - Inside view



Rear Chassis - Inside view

Chassis Assembly

Scale: NTS
Date: 6 Sep 96

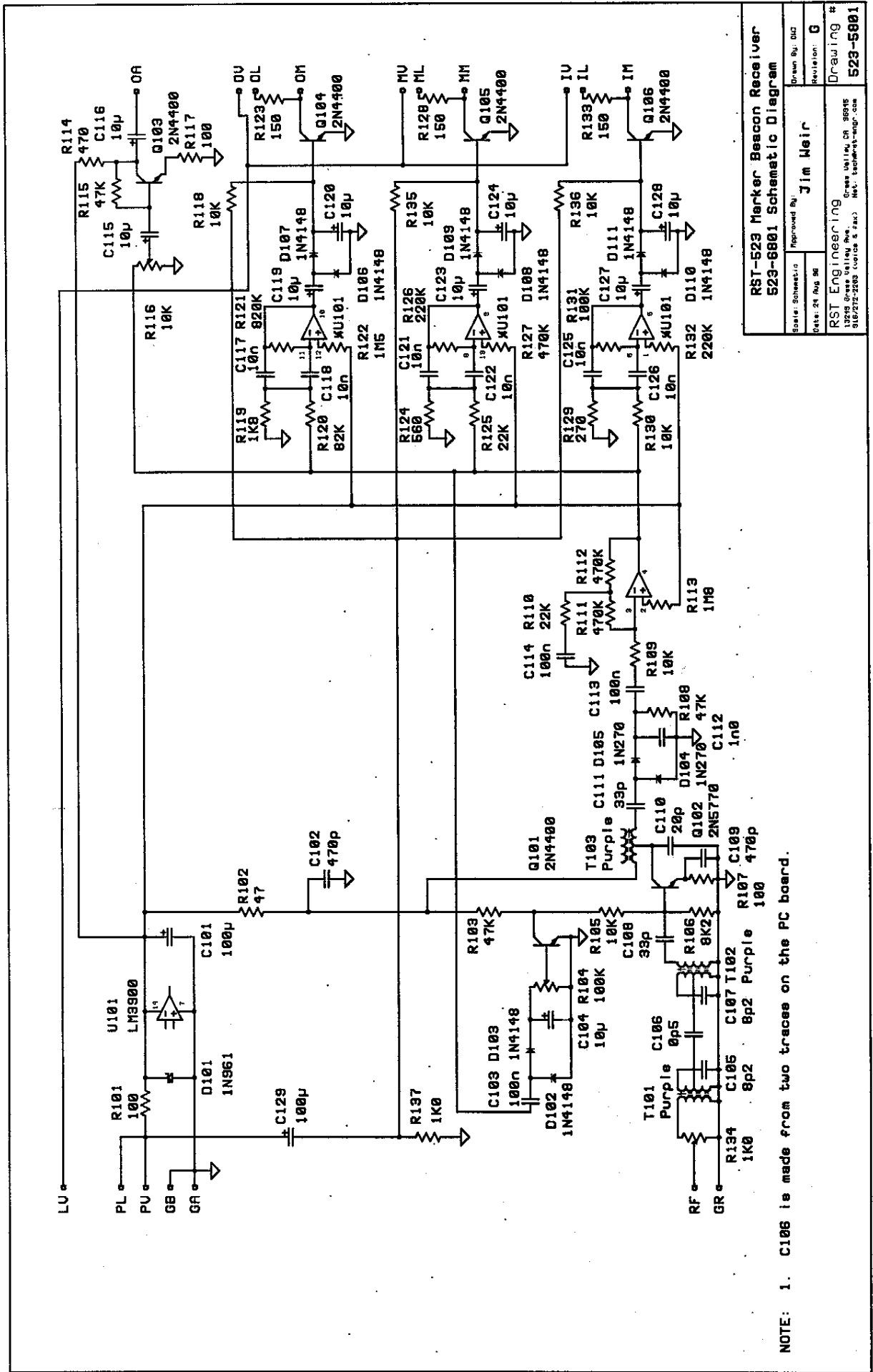
Approved by
Jim Weir

Drawn by: OWJ
Rev: A

RST Engineering

13249 Grass Valley Ave Grass Valley CA 95945
916/272-2203 (voice & fax) rst-engr@oro.net

Drawing #
523-4950



RST-523 Marker Beacon Receiver	
523-6801 Schematic Diagram	
Scale: Schematic	Approved By: Jim Heir
Date: 24 Aug 96	Revision: G
Drawn By: DUZ	
RST Engineering 13208 Rockville Rd. Rockville, MD 20850 301/272-2293 (voice & fax) Web: rst-engineering.com	
Drawing # 523-5801	

NOTE: 1. C105 is made from two traces on the PC board.