

2.5.3 Electrical Installation

Refer to Figure 2-6 thru 2-9 for appropriate connector wiring.

Use the Molex Crimp type contacts supplied. Refer to crimping method detailed in Section 2.5.3.1.

Before reinstalling connector previously removed, check that the cable leads were properly installed and that the key is in the correct position. Slide the connector through the opening, check that the marked side is on top, then secure.

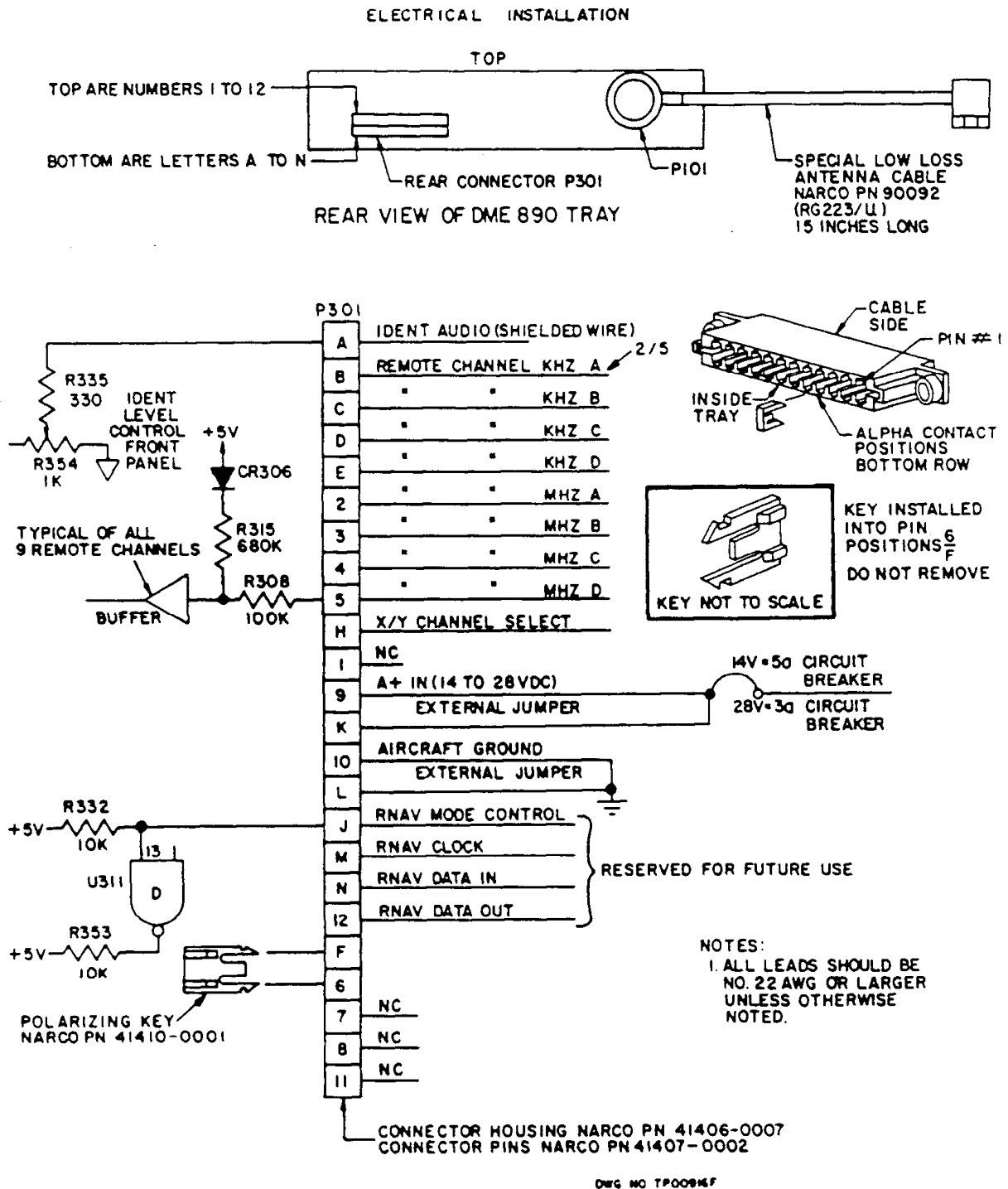


FIGURE 2-6. DME 890 REAR CONNECTOR WIRING